

Digital Poster | How to Answer Questions

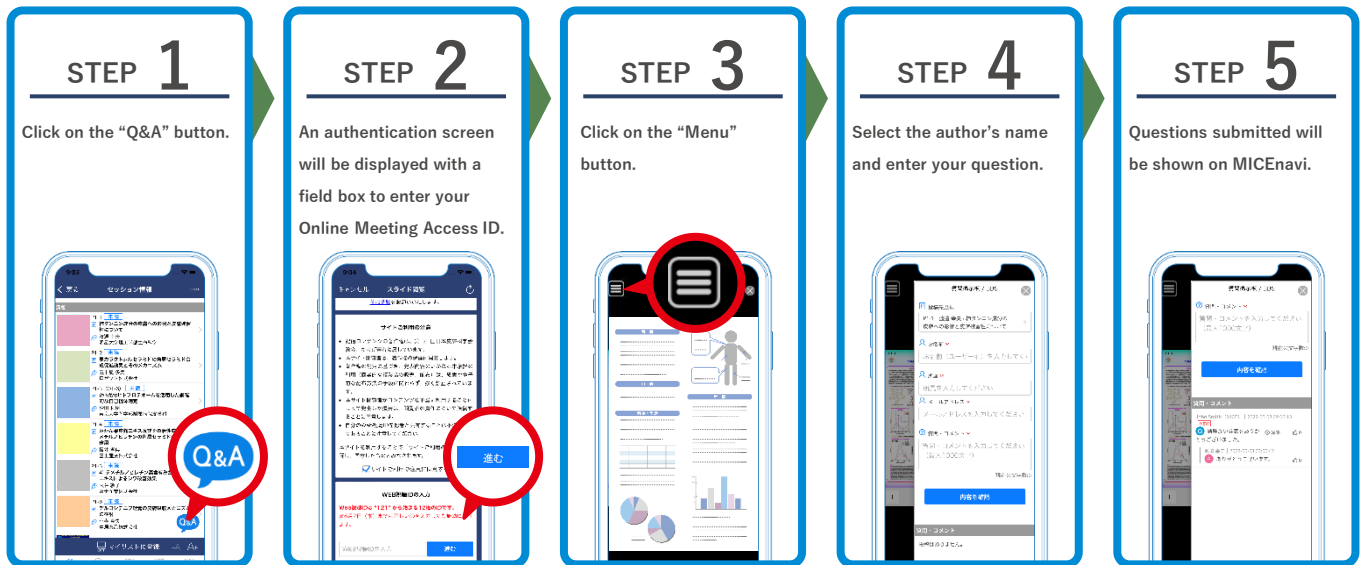
Thank you for your generous cooperation to the 125th Annual Meeting of the Japanese Dermatological Association (JDA). At the 125th JDA, we will accept participants to submit questions on the presentations through “MICEnavi”, in addition to accepting questions at the venue. To ensure a more interactive session, we would very much appreciate if you could answer these questions from participants. Your kind cooperation is sure to contribute to the success of the 125th JDA.

Question/Answer flow

- Participants will view poster presentations at the venue (New Hall), or view the presentations slides through “MICEnavi”.
- Participants can submit questions through MICEnavi during the meeting period from 11 June to 14 June.
- When a question is submitted, a notification email will be sent to the email address registered at the time the abstract was submitted. By clicking on the URL link in the email, the author will be directed to a designated website where he/she can view the submitted question.
- All participants' questions submitted through MICEnavi, and the authors' answers, will be shown on MICEnavi platforms.

How questions will be submitted (by Participants)

Participants may submit questions through the MICEnavi mobile app.



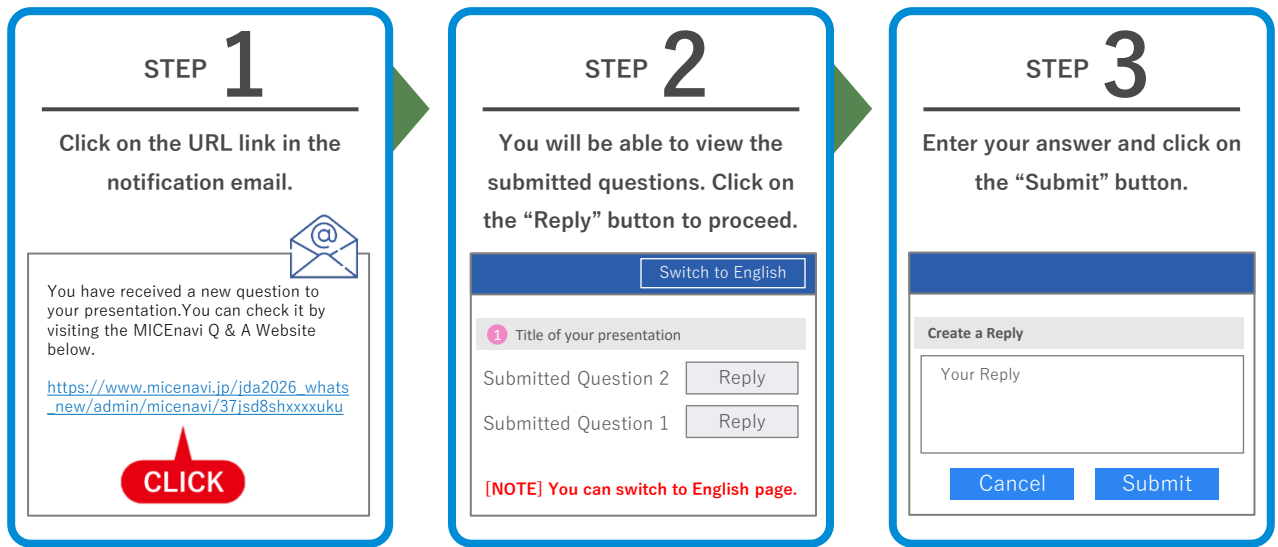
We also will provide “MICEnavi for PC” where participants may submit questions by clicking on the “質問を投稿” button, or from the “質問掲示板 / BBS” box located to the right of the presentation slides.



How to reply to questions (for Poster Presenters)

When a question is submitted, a notification email will be sent to the email address registered at the time the abstract was submitted. By clicking on the URL link in the email, the author will be directed to a designated website where he/she can view the submitted question.

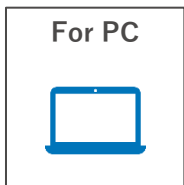
【Question Acceptance Period (JST)】 Thursday, June 11, 8:00 – Sunday, June 14, 17:00 **【Reply Deadline (JST)】 Friday, June 19, 17:00**



You will receive a notification email entitled “[MICEnavi] 第125回日本皮膚科学会総会：質問・コメントが投稿されました。 | The 125th Annual Meeting of the Japanese Dermatological Association: You have received a new question to your presentation.”

How to launch MICEnavi

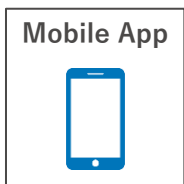
There are two platforms for MICEnavi: MICEnavi for PC and the MICEnavi mobile app.



URL <https://www.micenavi.jp/jda2026/>

Recommended Browsers (Please note that Internet Explorer is no longer supported):

- Microsoft Edge
- The latest version of Mozilla Firefox (Windows or macOS)
- The latest version of Google Chrome (Windows or macOS)
- The latest version of Safari (macOS)



Download “MICEnavi” App from the Apple App Store or the Google Play Store

Compatible with:

- iOS version 16.0 or above
- Android version 9.0 or above

